

**SPACECUBE.**

**CHANGING THE WAY  
THE WORLD BUILDS.**

“The world has changed.  
There is a growing demand  
for a more versatile and  
sustainable building solution”.

Jeremy Fisher - Founder SPACECUBE









MIRVAC 'SMITH LANE' DISPLAY

COMMERCIAL

© SPACECUBE PTY LTD





MONAH HEALTH RESUS FACILITY

HEALTHCARE

© SPACECUBE PTY LTD





ADAPTABLE LIVING RANGE

ACCOMMODATION

© SPACECUBE PTY LTD



# **A HIGHLY ENGINEERED, MODULAR BUILDING SYSTEM**

relocatable + reconfigurable + reusable





**Herald Sun**  
HOUSE

'HERALD SUN' MELB CUP '22

CORPORATE HOSPITALITY









'G.H.MUMM' MELB CUP '19

CORPORATE HOSPITALITY

© SPACECUBE PTY LTD

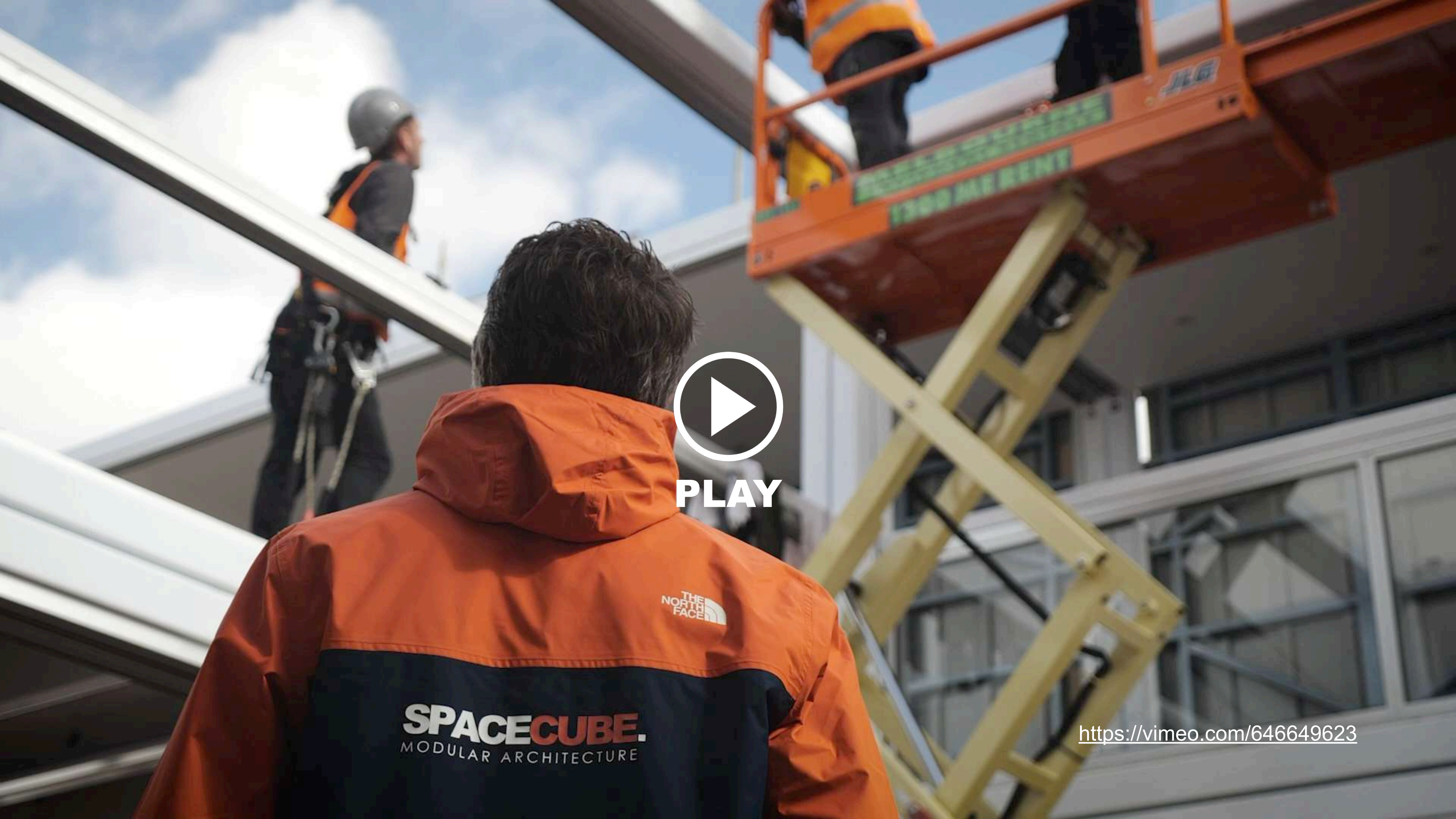


**SPACECUBE.**

WHAT WE DO

**DESIGN**  
**ENGINEER**  
**MANUFACTURE**  
**DELIVER &**  
**INSTALL**





PLAY

**SPACECUBE.**  
MODULAR ARCHITECTURE

<https://vimeo.com/646649623>



## **WHAT DO WE DO?**

SPACECUBE specialise in the design, development and delivery of turn-key modular solutions.

## **WHY DOES OUR PRODUCT EXIST?**

Whether it's events, brand activations, healthcare, accommodation or commercial applications there is growing demand for premium temporary infrastructure solutions that can meet continually increasing expectations from clients, and adapt to various environments and uses.

## **OUR VISION.**

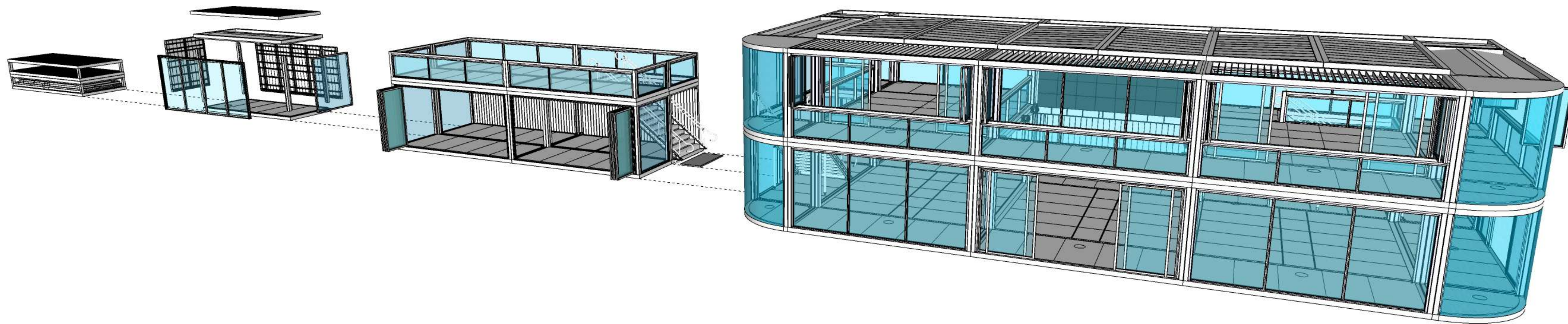
Our vision is to be the leader in reconfigurable modular infrastructure and own the premium temporary infrastructure market globally.

**SPACECUBE.**





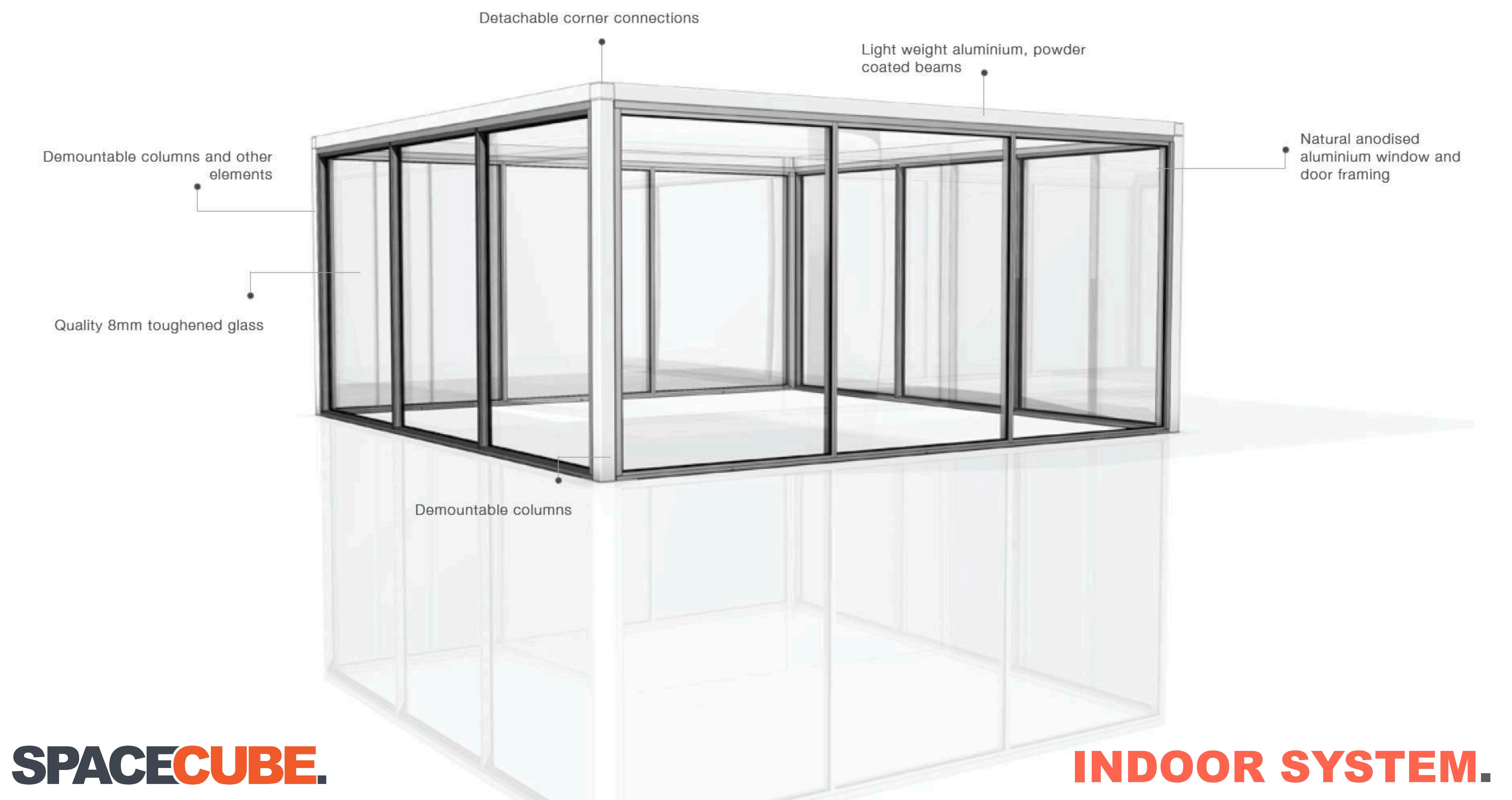




**SPACECUBE.**

**SCALABLE INFRASTRUCTURE.**









'TWITCH' EXHIBITION STAND

INDOOR SYSTEM

© SPACECUBE PTY LTD



**SPACECUBE.**

**FLAT-PACKABLE FOR  
EFFICIENT STORAGE &  
TRANSPORTATION**





1.



2.



3.



4.



5.



6.



7.



8.



9.

<https://vimeo.com/159331609>



# SPACECUBE KEY BENEFITS.

## **PREMIUM**

- Clean, simplistic design creates a highly resolved solution with minimal fit out required

## **QUICK DEPLOYMENT AND COST EFFECTIVE**

- Our unique modular building system enables timely deployment and onsite installation
- We consistently deliver to very tight deadlines thanks to our reduced lead times, quick-to-deploy infrastructure and a responsive team
- Flat-packability enables efficient transportation and storage

## **CUSTOMISABLE AND CONFIGURABLE**

- Allows flexibility to create spaces previously restricted to permanent builds (e.g. multi storey)
- Plug'n'play modular components allow clients to easily create 'bespoke' outcomes using off-the-shelf-product

## **EFFICIENT PROJECT MANAGEMENT**

- Our experienced team and streamlined processes ensure efficient and on-time project delivery, giving you or your clients peace of mind

**SPACECUBE.**



# SPACECUBE SYSTEM SOLUTIONS.

## CREATIVITY

- Configurable modules enable inspiring designs and bespoke outcomes from a relatively simple but highly engineered system

## MODULAR VS PRE-FABRICATED

- Pre-fabrication enables off-site manufacturing efficiencies but usually reduces flexibility onsite or the ability to have future use or varied applications
- Modular is often a term that is used to describe “pieces to make a whole”, truly modular means the ability to adapt and change with the same pieces

## BESPOKE

- Individual designs and layouts which are site specific or use specific can be easily achieved without having enormous expense, the key is using a versatile system approach
- We like to think of our modules as LEGO for adults, an infinite array of configurations can be achieved, within certain engineering parameters but all whilst providing a functional outcome

## TEMPORARY

- Transitional infrastructure doesn't have to be of a lesser quality
- A building system that has the ability to create interesting and premium spaces between permanent capital works projects

**SPACECUBE.**



# **PREMIUM TEMPORARY INFRASTRUCTURE**

Immersive, unforgettable and engaging experiences connecting people with brands...



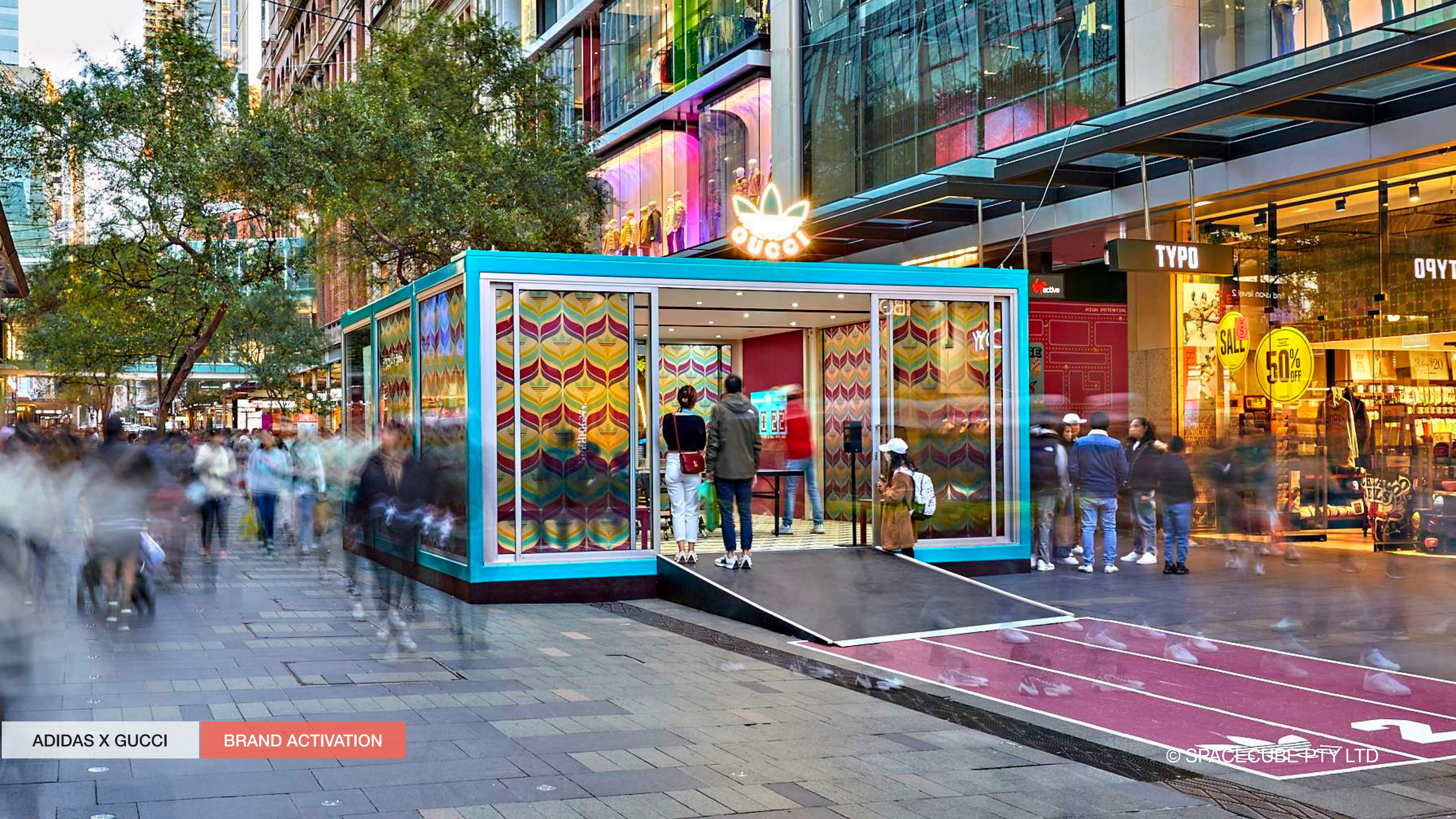


'PARAMOUNT' MELB CUP '22

EVENTS & BROADCASTING

© SPACECUBE PTY LTD





ADIDAS X GUCCI

BRAND ACTIVATION

© SPACECUBE PTY LTD





POLESTAR 2 LAUNCH

BRAND ACTIVATION

© SPACECUBE PTY LTD





'FEFE' MELB CUP '22

EVENT STRUCTURE

© SPACECUBE PTY LTD



# SUSTAINABILITY.

SPACECUBE is a SUSTAINABLE solution with **90%** of build components being totally reusable.

Also using **60% less construction materials** compared to status quo, **32%** of materials re-used for other builds and **5%** sent to waste diversion program.





# **HIGHLY VERSATILE HYBRID BUILDING SYSTEM**

Versatile and sustainable building alternatives for commercial construction...





MIRVAC INSTALLATION

COMMERCIAL CONSTRUCTION

<https://vimeo.com/395062783>





MIRVAC 'SMITH LANE' SALES SUITE

COMMERCIAL

© SPACECUBE PTY LTD





THE NEW CITY NEIGHBOURHOOD

DARLING SD  
SYDNEY

lendlease

LENDLEASE DISPLAY SUITE

COMMERCIAL

© SPACECUBE PTY LTD



# **QUICK DEPLOYMENT FOR EMERGENCY SERVICES**

Rapid and reliable healthcare infrastructure solutions for communities and healthcare providers in need...





**PLAY**

MONASH HEALTH

HEALTHCARE

<https://vimeo.com/423461278>











# HIGH-SPEC ADAPTABLE LIVING OFF-THE-GRID

High-end, off-grid, modular accommodation connecting people with nature...





ADAPTABLE LIVING

OFF-GRID ACCOMMODATION

© SPACECUBE PTY LTD





ADAPTABLE LIVING

BEDROOM

© SPACECUBE PTY LTD





ADAPTABLE LIVING

KITCHEN

© SPACECUBE PTY LTD

Microwave	Grill/ Convection	Combi
Defrost	Auto Cook	Preheat





TASMANIAN WALKING CO

TOURISM ACCOMMODATION

© SPACECUBE PTY LTD



# SPACECUBE.

Not Ordinary.

AUSTRALIA + NEW ZEALAND + UK + EUROPE

[WWW.SPACECUBE.COM](http://WWW.SPACECUBE.COM)