



PROJECT OVERVIEW.

Client: Mirvac

Pushing the boundaries once again, SPACECUBE was thrilled to provide the modular building system for this stunning 'Smiths Lane by Mirvac' property display suite. Installed in one week using seven cubes, two mini cubes and two pitched-roof modules, this beautiful display suite will be onsite for a couple of years. The complete build includes full plumbing, drainage, electrical connections and a functional cafe, community centre and landscaped garden which was all finished within six weeks.

SPACECUBES

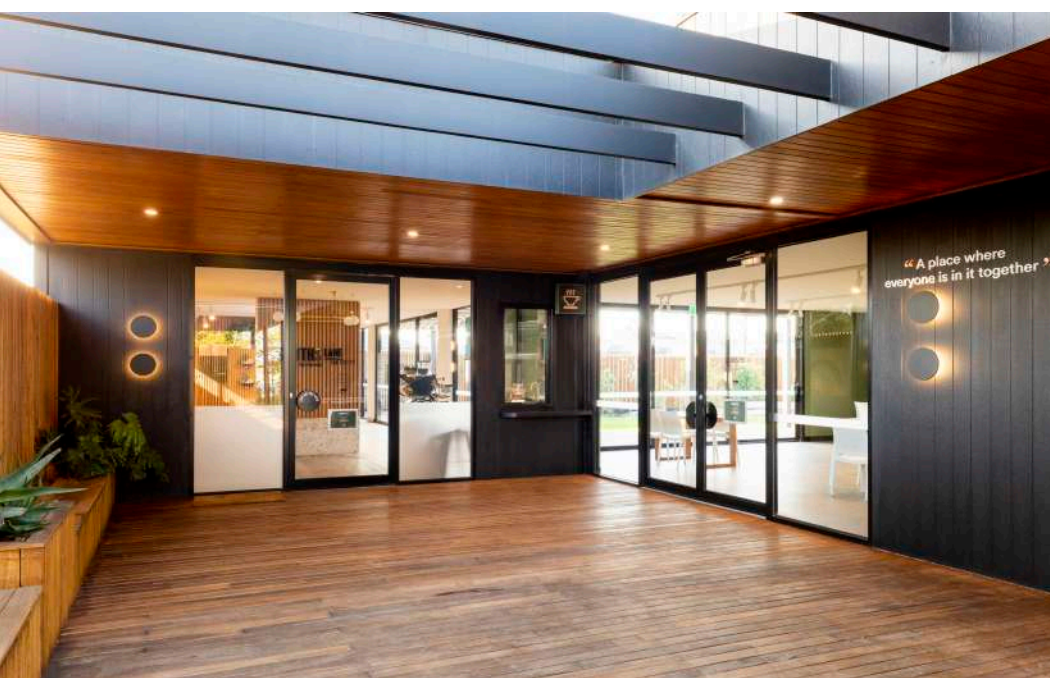
7 x Cubes, 2 x Mini Cubes, 2 x Mezzanine Modules, Custom Deck and Custom Verandah.

LOCATION

Clyde North, Melbourne.

FLOOR AREA 190m²

FOOT PRINT 190m²



www.spacecube.com
info@spacecube.com

SPACECUBE.